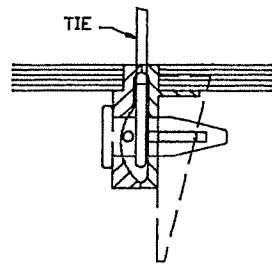
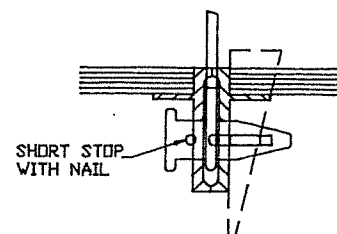


SIDE RAIL TO SIDE RAIL CONNECTION

TYPICAL PANEL CONNECTION MADE @ 2'0" c/c WITH TIE LOAD CARRIED TO FORM PANEL BY STEEL KEY

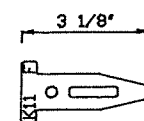


SIDE RAIL TO END RAIL CONNECTION

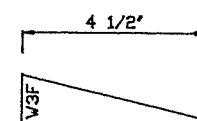


END RAIL TO END RAIL CONNECTION

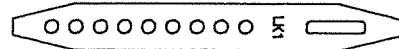
TYPICAL KEY & WEDGE CONNECTION



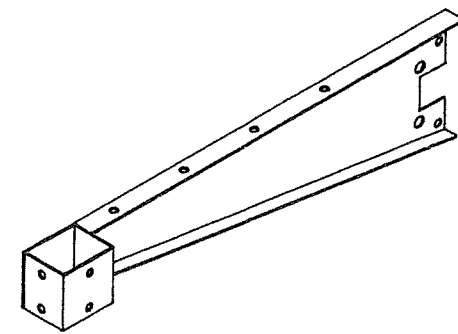
FSI KEY



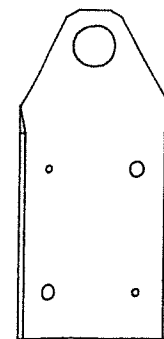
FSI WEDGE



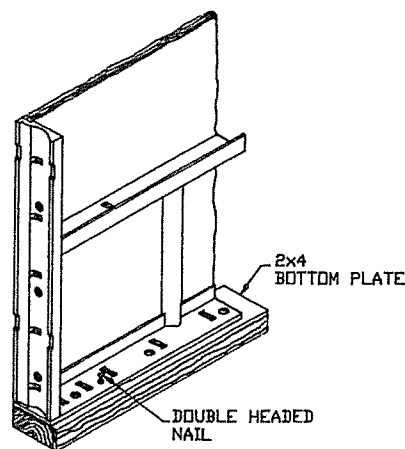
FSI LONG KEY



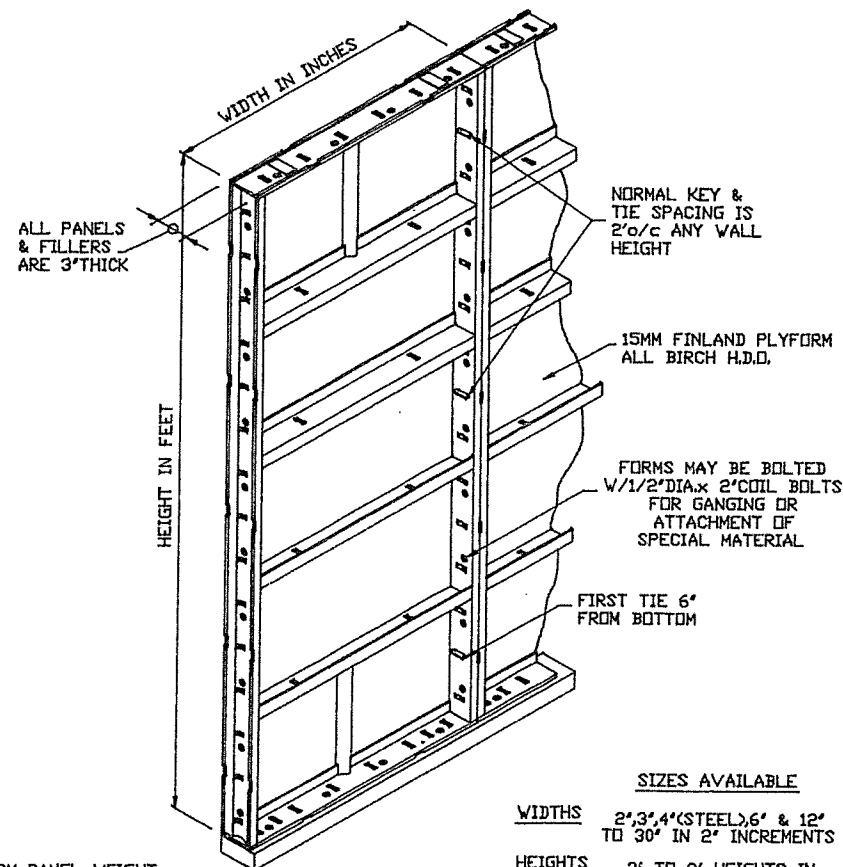
ATTACH TO HANDSET FORM WITH (2) 1/2" DIA x 3" COIL BOLTS WITH NUTS
TYPICAL WALKWAY BRACKET



COLUMN BRACE PLATE



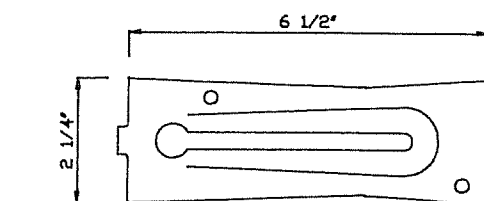
ATTACHMENT OF FORM TO PLATE USING DOUBLE HEADED NAILS



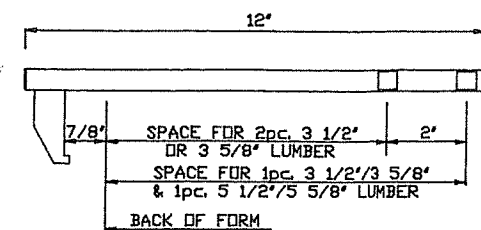
TYPICAL F.S.I. FORM

FORM PANEL WEIGHT	
24"x 8' =	74 lbs.
24"x 6' =	56 lbs.
24"x 4' =	38 lbs.

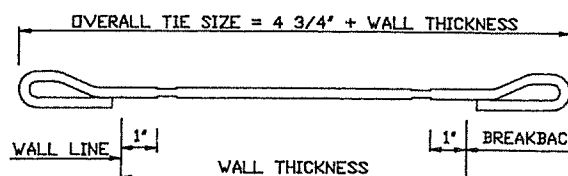
SIZES AVAILABLE	
WIDTHS	2', 3', 4' (STEEL), 6' & 12' TO 30' IN 2' INCREMENTS
HEIGHTS	3' TO 8' HEIGHTS IN 1'-0" INCREMENTS



SNAPTIE CLAMP

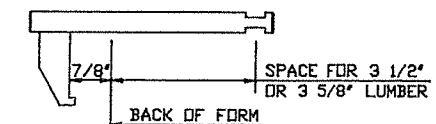


FSI ROD STRONGBACK CLAMP

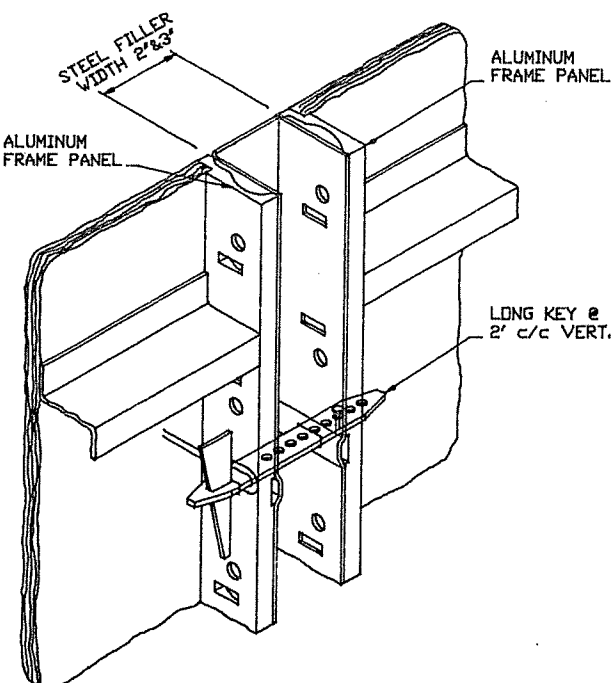


WIRE LOOP TIE

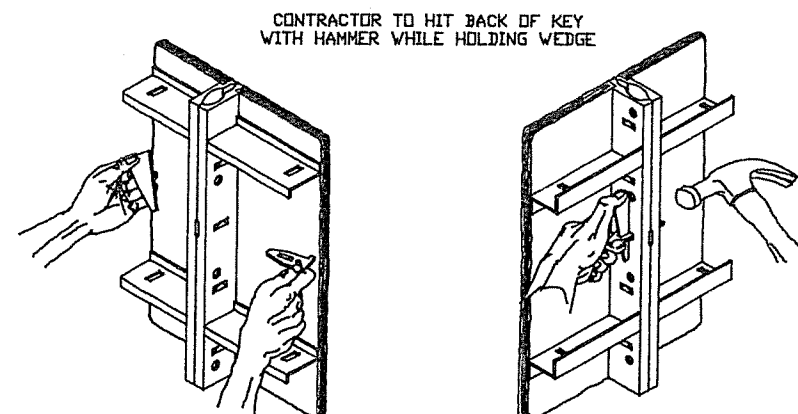
7500 lbs. ULTIMATE LOAD



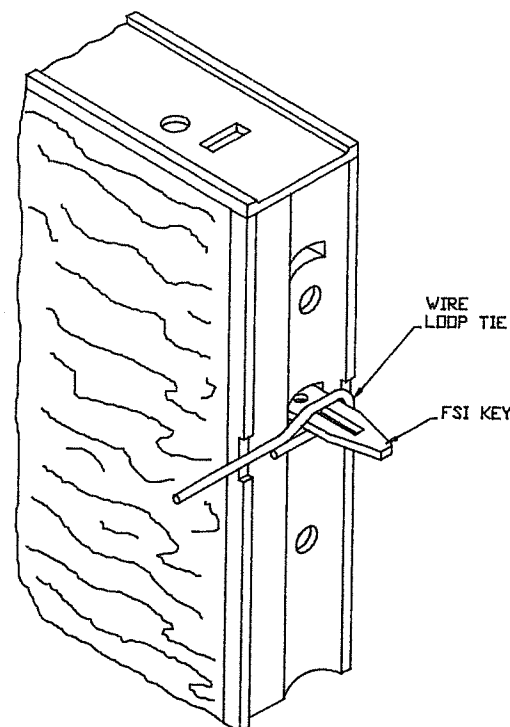
FSI ROD LINER CLAMP



LONG KEY INSTALLATION



PROPER KEY & WEDGE INSTALLATION



TYPICAL TIE CONNECTION

GENERAL NOTES

THIS DRAWING IS PROVIDED AS A SERVICE TO THE CUSTOMERS OF FORM SERVICES, INC., FOR INFORMATIVE AND ILLUSTRATIVE PURPOSES ONLY. IT IS NOT INTENDED TO BE DIRECTIVE NOR IS IT ENGINEERED FOR ALL DETAILS AND THEREFORE MUST BE USED IN CONJUNCTION WITH THE CONTRACT DRAWINGS.

FORM SERVICES, INC. WILL PROVIDE THE CONTRACTOR WITH DETAIL LAYOUT DRAWINGS FOR EACH PROJECT.

THIS PRINT IS THE PROPERTY OF FORM SERVICES, INC., AND IS FURNISHED FOR THE EXCLUSIVE USE OF THE CUSTOMER ON THE CONDITION THAT IT IS NOT TO BE COPIED OR USED BY OTHERS WITHOUT THE WRITTEN CONSENT OF FORM SERVICES, INC.

FSI HANDSET FORM HAS A WORKING LOAD OF 1200 PSF AT A 2 TO 1 SAFETY FACTOR



FORM SERVICES, INC.

CONCRETE FORMING EQUIPMENT & ACCESSORIES

LOCAL 788-3600

MARYLAND 800-422-2165 OUT OF STATE 800-438-3395
P.O. Box 60, Littleton Heights, Md. 21106-0060

"TECHNICAL SUPPORT BEHIND EVERY PRODUCT"

FORM SERVICES, INC.
FORM SERVICES HANDSET STANDARDS

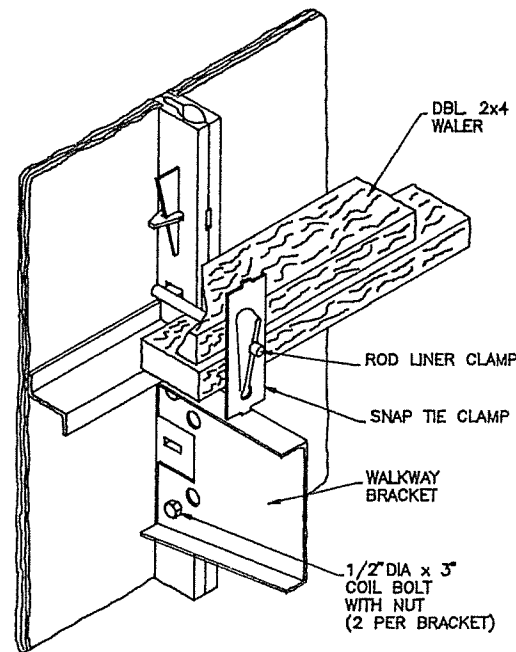
PROJ. NO:

FSI-STD

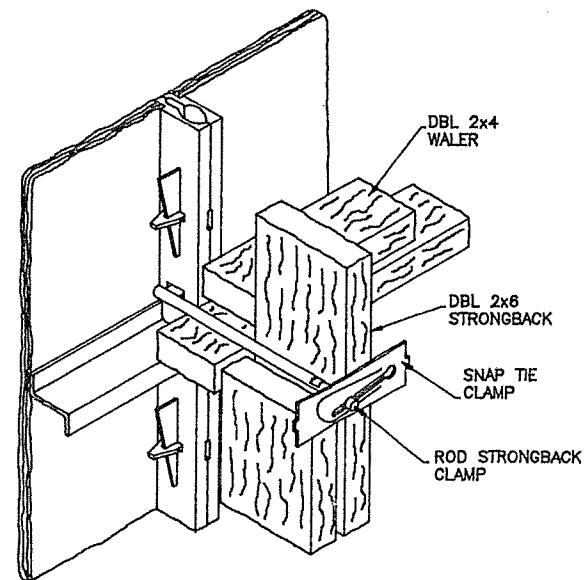
SHEET NO:

1 OF 4

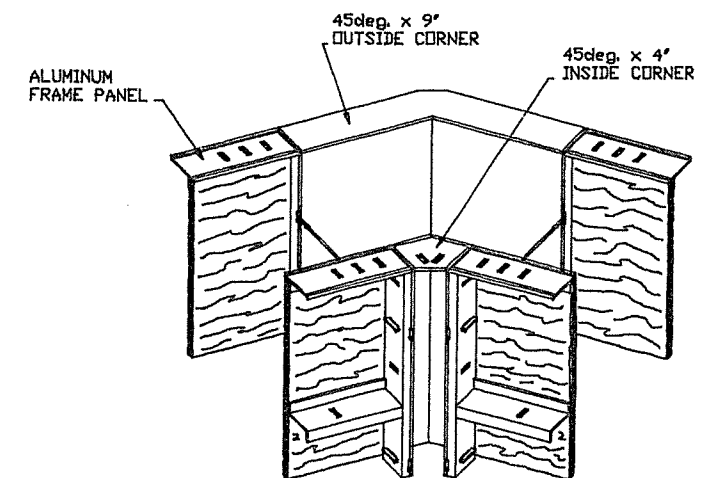
DRN. BY BRIAN SHEFFIELD ON 4/2/90 CHK. BY ON REV. NO: 0



TYPICAL WALER & WALKWAY BRKT. ATTACHMENT

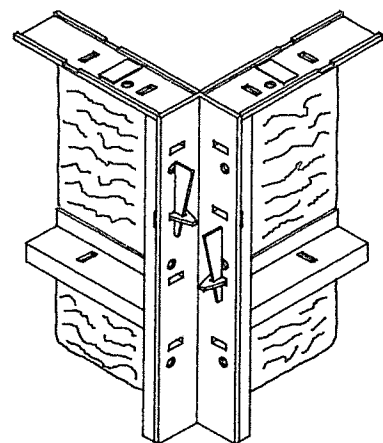


TYPICAL STRONGBACK ATTACHMENT

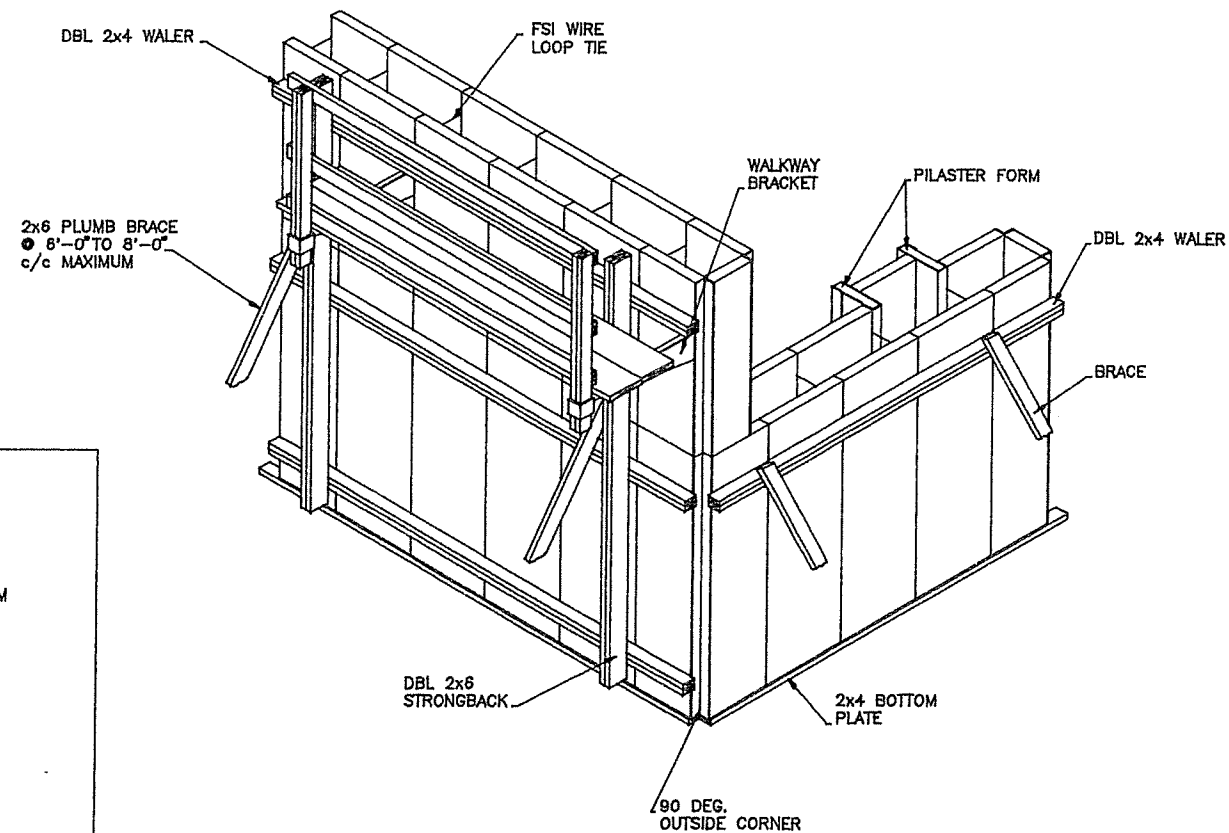


TOTAL SHIM REQUIREMENTS			
WALL THICKNESS	INSIDE SHIM	WALL THICKNESS	OUTSIDE SHIM
6"	2" FILLER	12"	NONE
7"	1 1/4" FILLER	13"	1 1/4" OR NONE
8"	2x4	14"	1x4
9"	2x4	15"	2x4
10"	1x4	16"	2x4
11"	1 1/4" OR NONE	17"	2" FILLER
12"	NONE	18"	2" FILLER 1x4, NONE

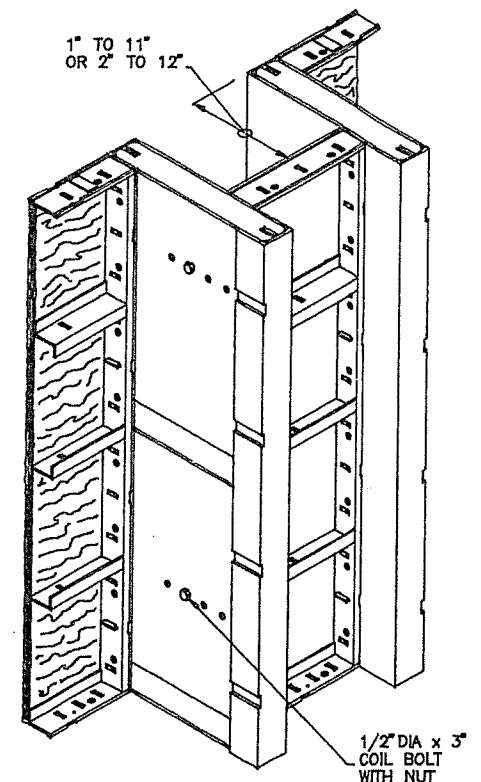
TYPICAL 45 DEG. CORNER
(AS SHOWN FOR 12" WALL)



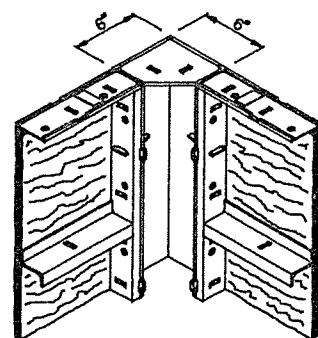
TYPICAL 90 DEG. OUTSIDE CORNER



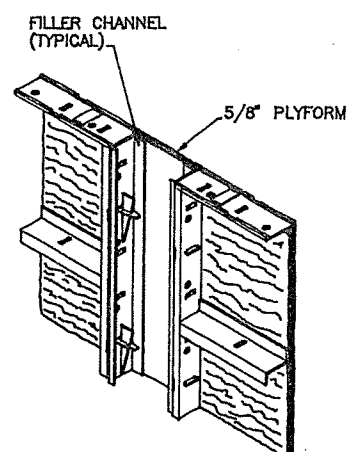
TYPICAL ASSEMBLY DETAIL



TYPICAL PILASTER FORM



TYPICAL 90 DEG. INSIDE CORNER



TYPICAL WOOD FILLER



FORM SERVICES, INC.

CONCRETE FORMING EQUIPMENT & ACCESSORIES

LOCAL 708-3398

MARYLAND 800-482-3100 OUT OF STATE 800-638-3398

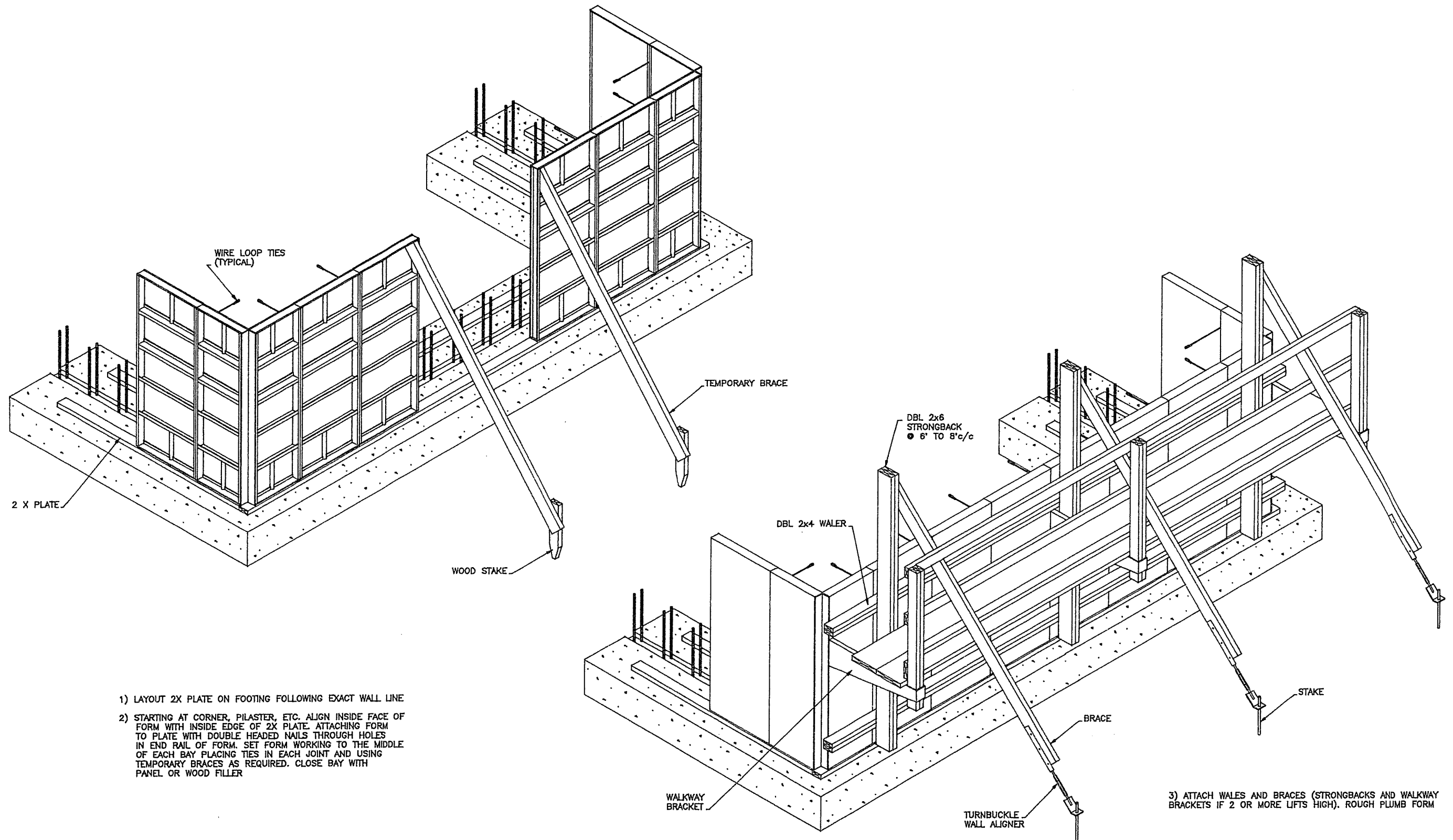
P.O. Box 60, Littleton Heights, Md. 21080-0060

"TECHNICAL SUPPORT BEHIND EVERY PRODUCT"


FORM SERVICES, INC.
FORM SERVICES HANDSET STANDARDS

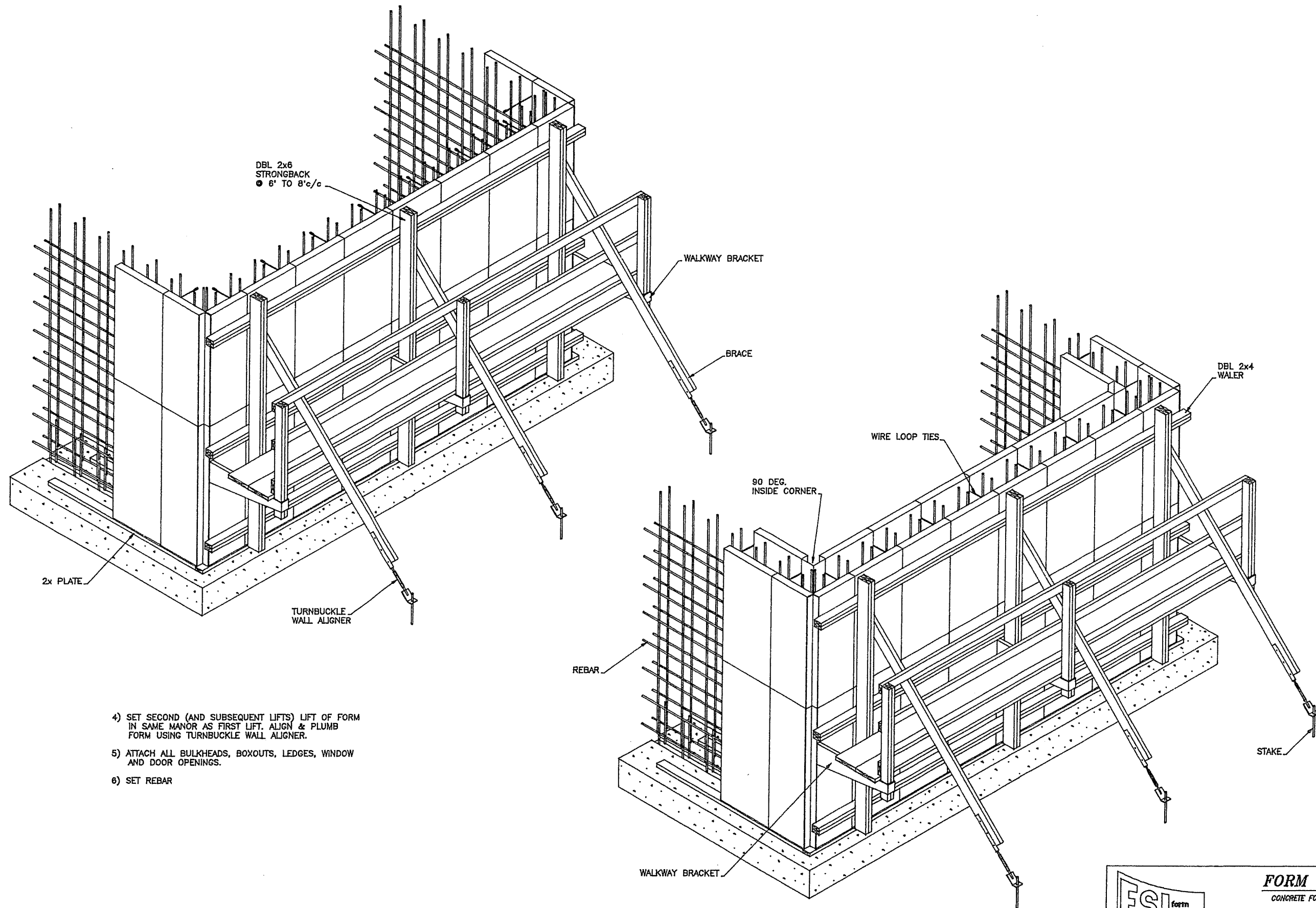
PROJ. NO:
FSI-STD
SHEET NO:
2 OF 4

DRN. BY BRIAN SHEFFIELD ON 4/2/90 CHK. BY ON REV. NO: 0



ERECTION SEQUENCE


	FORM SERVICES, INC. CONCRETE FORMING EQUIPMENT & ACCESSORIES LOCAL 788-5598 MARYLAND 800-462-2185 OUT OF STATE 800-638-3333 P.O. Box 60, Littleton Heights, Md. 21090-0060	
	"TECHNICAL SUPPORT BEHIND EVERY PRODUCT"	
FORM SERVICES, INC. FORM SERVICES HANDSET STANDARDS		PROJ. NO: FSI-STD SHEET NO: 3 OF 4
DRN. BY BRIAN SHEFFIELD ON 4/2/90 CHK. BY ON		REV. NO: 0

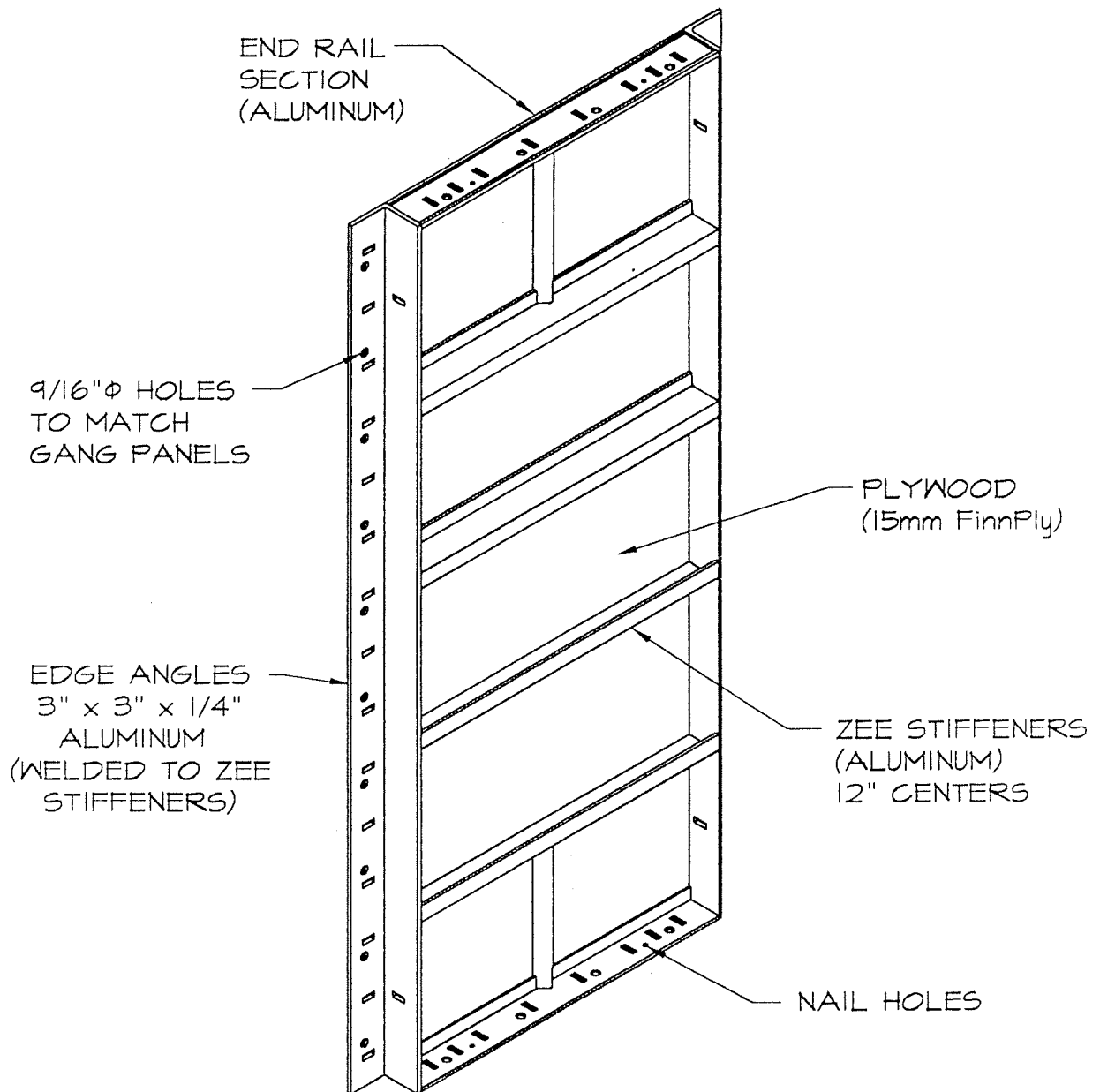


- 4) SET SECOND (AND SUBSEQUENT LIFTS) LIFT OF FORM IN SAME MANNER AS FIRST LIFT. ALIGN & PLUMB FORM USING TURNBUCKLE WALL ALIGNER.
- 5) ATTACH ALL BULKHEADS, BOXOUTS, LEDGES, WINDOW AND DOOR OPENINGS.
- 6) SET REBAR

ERECTION SEQUENCE

- 7) PLACE FORM ON CLOSE UP SIDE, AGAIN STARTING AT CORNERS AND WORKING TO MIDDLE, MAKING SURE TO CONNECT ALL WIRELOOP TIES
- 8) POUR AT RATE INDICATED ON FSI LAYOUTS

 FORM SERVICES, INC. CONCRETE FORMING EQUIPMENT & ACCESSORIES LOCAL 703-6008 MARYLAND 800-458-2198 OUT OF STATE 800-638-3306 P.O. Box 60, Littleton Heights, Md. 21090-0060		PROJ. NO:
		FSI-STD
FORM SERVICES, INC.		SHEET NO:
FORM SERVICES HANDSET STANDARDS		4 OF 4
DRN. BY BRIAN SHEFFIELD ON 4/2/90 CHK. BY _____ ON _____		REV. NO: 0



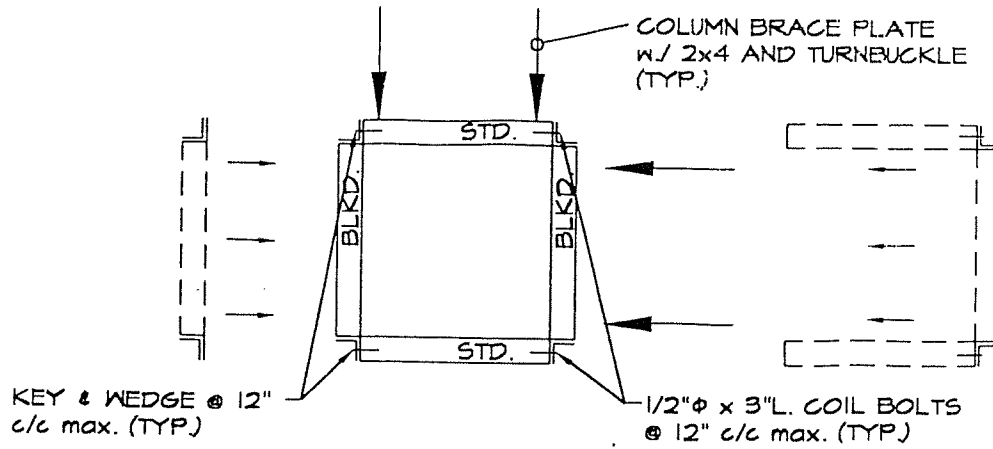
FSI BULKHEAD PANEL



FORM SERVICES INC.

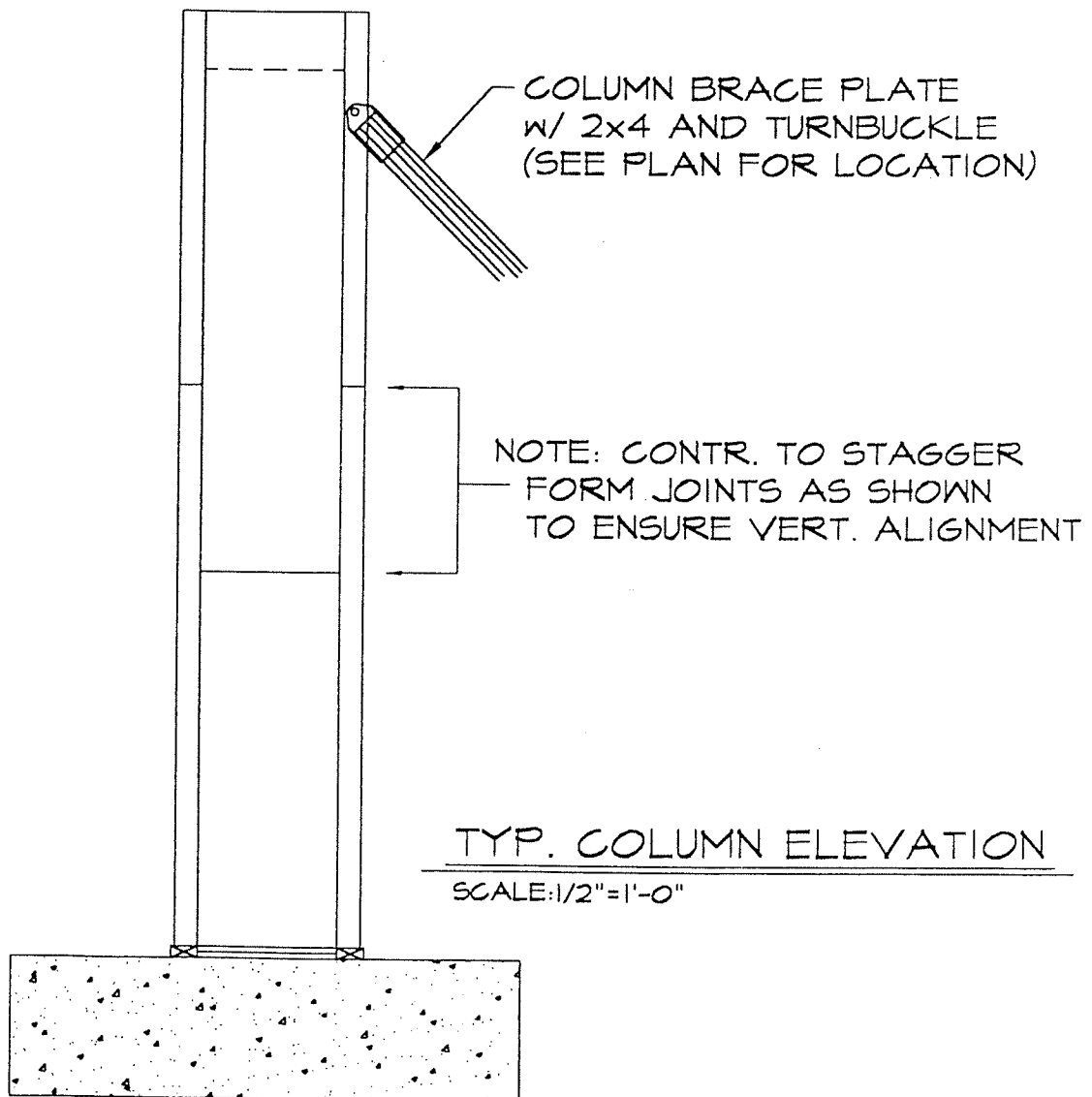
CONCRETE FORMING EQUIPMENT & ACCESSORIES

LOCAL (410) 247-9500 OUT OF STATE (800) 638-3395
3119 Hammonds Ferry Rd.; Baltimore, MD 21227



TYPICAL COLUMN DETAIL

SCALE: 3/4"=1'-0"



TYP. COLUMN ELEVATION

SCALE: 1/2"=1'-0"



FORM SERVICES INC.

CONCRETE FORMING EQUIPMENT & ACCESSORIES

LOCAL (410) 247-9500 OUT OF STATE (800) 638-3395
3119 Hammonds Ferry Rd., Baltimore, MD 21227